



Light up the life with  
**Solar Energy...**



# SOLAR

## STREET LIGHT



**SUNLIGHT INFRA ENERGY PVT. LTD.**  
A-1305, Empire Business Hub,  
Science City Road, Sola,  
Ahmedabad-380060, Gujarat, India.

✉ info@sunlights.in    ☎ +91 079 4847 8899  
@ www.sunlights.in    📠 +91 079 4847 8899  
☎ +91 99983 74580  
☎ +91 90677 34339

www.ideationdesign.in

www.sunlights.in





## TWO IN ONE (SEMI-INTEGRATED) SOLAR STREET LIGHT

### FEATURES

- Significant cost savings in avoiding to lay down electrical wires, distribution points, employing labor and doing away with digging hassles
- High durability of solar panels and LEDs. Both solar panels and LEDs last for more than 10 years. In comparison, the conventional sodium and CFL lamps typically require replacement at least once every year
- Close to a month's time saved in newly constructed places as a result of easy installation (feedback from builders)
- Zero electricity cost
- Environment friendly and easy disposal due to absence of harmful substances like mercury and lead
- Less heat dissipation
- Higher color temperature of light (purer form of light)
- Carbon credits and subsidies may be availed for large installations
- Cleaner and greener environment to breathe

### SPECIFICATIONS

Reflow soldered OSRAM LEDs should be used with cool white light output. LEDs which can be hand soldered should not be used so as to minimize human interference and increases the reliability of LEDs

1. 150 lm/LED at 350mA
2. Asymmetric lenses with 85\*135 angle for optional spread on street. Lenses should be such that the light output falling behind the pole should be minimized and falling in front and laterally should be maximized
3. Power saving mode after 6 hours of operation up to 50% of savings for longer life

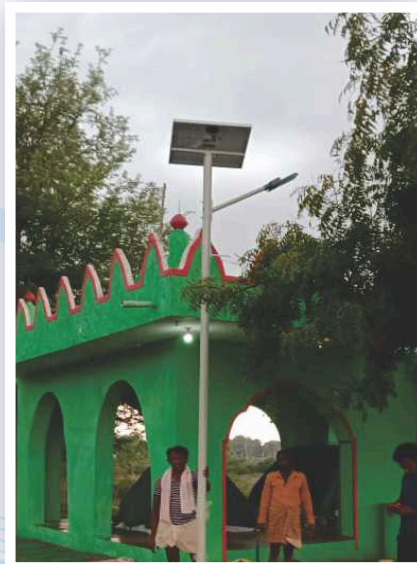
### Electronics:

4. Microcontroller based PWM charging with the following features:
  - a. Constant current Phase : All charge current available is used to charge battery.
  - b. Constant voltage Phase : Constant battery voltage towards end charges to prevent excessive gassing
  - c. Float Stage (below gassing voltage to avoid electrolyte loss)
5. Constant current driver. Driver Efficiency >90%
6. Reverse polarity protection without the use of fuse to ease up installation in spite of human error
7. Battery charge indicator for different levels of the battery should be present on the fixture, indicating at least 4 levels of battery for easier maintenance. Apart from this, low battery & charging indicators should also be present
8. Parallel back up LED pads with each LED should be present so as to replace the LEDs easily in case one of them fails in future



TWO IN ONE (SEMI-INTEGRATED) SOLAR STREET LIGHT						
SPECIFICATIONS	9W	12W	15W	18W	24W	30W
Model No:	SUN9W	SUN12W	SUN15W	SUN18W	SUN24W	SUN30W
Solar Panel :	40Wp	50Wp	50Wp	60Wp	75Wp	100Wp
Battery Size :	12Ah LifePo4	12Ah LiFePo4	12Ah LiFePo4	18Ah LiFePo4	24Ah LifePo4	42Ah LiFePo4
Driver Efficiency	Greater than 85%					
LED Luminous Efficiency	>80%					
LED Working Voltage	3.18V (350mA)					
Power Consumption	9W	12W	15W	18W	24W	30W
CRI	70-82					
Light Source	OSRAM/CREE					
Height Of Pole	5 mtr To 7 mtr					
Maximum Current Consumption	350mA					
Max Temperature of Heat Sink	65° C					
LED Beam Angle	80° /td>					
Storage Temperature	35° C					
Body Type	High Pressure Aluminium Die Cast					
Warranty	5 Years					

## INSTALLATION



## ALL IN ONE (INTEGRATED) SOLAR STREET LIGHT

### FEATURES

- Integrated solar panel. LED light, PIR motion sensor, LI-ION/LitePO4 battery and high efficiency solar charge controller
- PIR sensor adjusts LED brightness on sensing motion (12m range)
- LEDs dim to 1/3 intensity after 1minute of detecting no motion
- Automatic dusk to down operation & solar panel dusty indication
- Microcontroller based design enables intelligent and efficient working
- Lithium-ion/LifeR04 battery technology provides longer product life and is completely maintenance free
- GREEN & RED LEDs for indicating battery charging /fault

### LED LIGHT

Our updated design utilizes a new CNC production technique and is fabricated from aluminum extrusion which significantly improves led thermal heat dissipation by up to 115%, this in turn improves the longevity of the led's promising more long term system reliability

### SMART EYE

Detects movements within several meters of the unit and automatically regulates the output of the led lamp from a 'dim light' to 'full brightness' depending upon weather motion is detected

### POSSIBLE APPLICATIONS

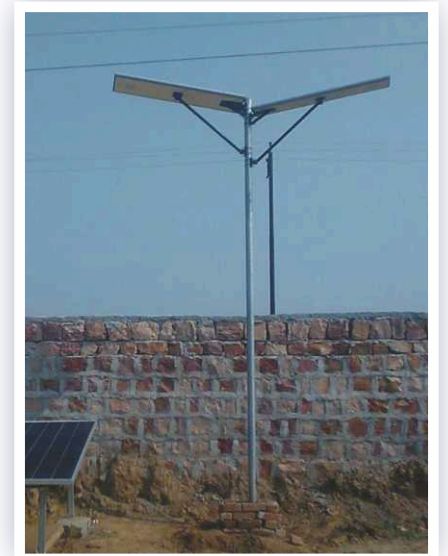
Gardens | Area Lightning | Parking Lots | Pathways | Camping | Parks | Small Roads | Security Lightning





## INSTALLATION

ALL IN ONE (INTEGRATED) SOLAR STREET LIGHT						
SPECIFICATIONS	9W	12W	15W	18W	24W	30W
Model No:	SUN9W	SUN12W	SUN15W	SUN18W	SUN24W	SUN30W
Solar Panel :	40Wp	50Wp	50Wp	60Wp	75Wp	100Wp
Battery Size :	12Ah LifePo4	12Ah LiFePo4	12Ah LiFePo4	18Ah LiFePo4	24Ah LifePo4	42Ah LiFePo4
Motion Sensor	PIR Motion Sensor (10M Range)					
Dimming	Dimming to 1/3 Intensity On Detecting No Movement For More Than 30 Second					
Solar Charge Controller Rating	10A					
Dusk To Down	Yes					
CRI	70-82 LED					
Dispersion Angle – With Optics	120°					
Height Of Pole	5 mtr To 7 mtr					
Light Backup Time	Full Night With Dimming					
LED Driver Efficiency	>95% (Battery To Load)					
Operating Temperature Range	-40 °C To 60 °C					
Color Temperature	3000K-6500K					
Body Type	High Pressure Aluminum Die Cast					
Warranty	5 Years					



## HIGH MAST LIGHT SYSTEM INSTALLATION

